

Professionals Directory



Edward D. Altabet

Member

Litigation

973-447-9671

ealtabet@bracheichler.com



Stan Barrett

Member

Litigation

973-364-5210

sbarrett@bracheichler.com



Jonathan D. Bick

Counsel

Patent, Intellectual Property & IT
• Copyright Agent Services

973.403.3155

jbick@bracheichler.com



Eric J. Boden

Associate

Litigation

973.403.3101

eboden@bracheichler.com



Brian W. Brown

Associate

Personal Injury

973-447-9651

bbrown@bracheichler.com



Lindsay P. Cambron

Counsel

Environmental and Land Use •
Family Law Services • Litigation
• Real Estate

973.364.5232

lcambron@bracheichler.com



Alex S. Capozzi

Member

Personal Injury • Litigation

973.364.5212

acapozzi@bracheichler.com



Edward P. Capozzi

Member

Personal Injury

973.364.5204

ecapozzi@bracheichler.com



Shannon Carroll

Member

Healthcare Law • Litigation

973.403.3126

scarroll@bracheichler.com



Jessica L. Cascio

Associate

Family Law Services

973.403.3138

jcascio@bracheichler.com



Doris Cheung

Counsel

Litigation

973.364.8309

dcheung@bracheichler.com



**Hon. Lisa F.
Chrystal, P.J.F.P. (Ret.)**

Counsel

Alternative Dispute Resolution

973-364-8359

lchrystal@bracheichler.com



Vanessa Coleman

Associate

Healthcare Law

973.364.5208

vcoleman@bracheichler.com



Matthew M. Collins

Member

Labor and Employment •
Cannabis Industry • Litigation

973.403.3151

mcollins@bracheichler.com



Mark E. Critchley

Counsel

Litigation

973.364.8339

mcritchley@bracheichler.com



Riza I. Dagli

Member

Criminal Defense and
Government Investigations •
Cannabis Industry •
Environmental and Land Use •
Healthcare Law • Litigation

973.403.3103

rdagli@bracheichler.com



Jonathan S. Davis

Member

Corporate Transactions &
Financial Services • Real Estate

973.403.3118

jdavis@bracheichler.com



Ellen E. De Lisi

Associate

Corporate Transactions &
Financial Services

973.403.3108

edelisi@bracheichler.com



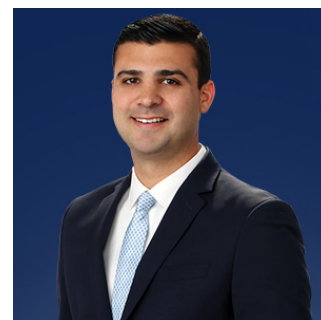
Paul M. De Lisi

Member

Corporate Transactions &
Financial Services • Real Estate

973.403.3153

pdelisi@bracheichler.com



Paul J. DeMartino, Jr.

Counsel

Healthcare Law • Litigation

973.364.5228

pdemartino@bracheichler.com



Corey A. Dietz

Member

Personal Injury

973.364.5213

cdietz@bracheichler.com



Lani M. Dornfeld

CHPC, Member

Healthcare Law • Cannabis Industry

973.403.3136

ldornfeld@bracheichler.com



Susan K. Dromsky-Reed

Member

Trusts and Estates • Tax • Family Law Services

973.403.3146

sdromsky-reed@bracheichler.com



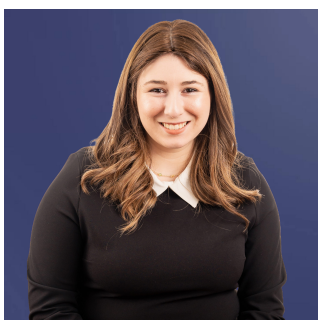
Edward Ellersick

Counsel

Litigation • Healthcare Law

973.364.5205

eellersick@bracheichler.com



Rebecca T. Falk

Associate

Healthcare Law

973-364-8393

rfalk@bracheichler.com



John D. Fanburg

Managing Member

Healthcare Law • Cannabis Industry

973.403.3107

jfanburg@bracheichler.com



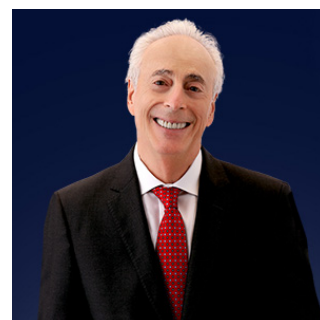
Joseph A. Ferino

Member

Corporate Transactions & Financial Services

973.364.8351

jferino@bracheichler.com



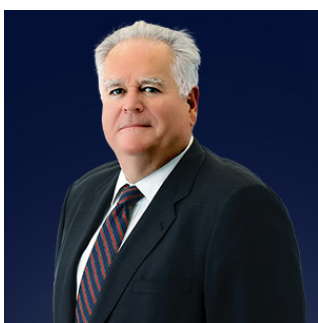
Stuart M. Gladstone

Member

Trusts and Estates • Corporate Transactions & Financial Services • Tax

973.403.3109

sgladstone@bracheichler.com



Charles X. Gormally

Member

Litigation • Cannabis Industry • Criminal Defense and Government Investigations • Labor and Employment

973.403.3111

cgormally@bracheichler.com



Joseph M. Gorrell

Member

Healthcare Law

973.403.3112

jgorrell@bracheichler.com



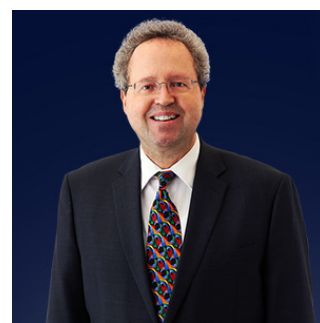
Carol Grelecki

Member

Healthcare Law • Cannabis Industry

973.403.3140

cgrelecki@bracheichler.com



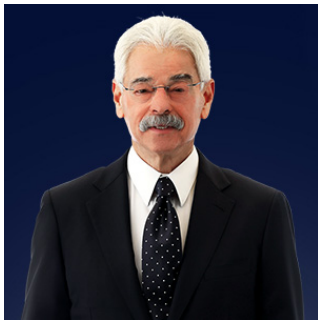
Alois V. Habjan

Member

Real Estate

973.403.3128

ahabjan@bracheichler.com



Alan R. Hammer

Member

Real Estate • Real Estate Tax Appeals

973.403.3113

ahammer@bracheichler.com



Edward Hilzenrath

Member

Healthcare Law

973.403.3114

ehilzenrath@bracheichler.com



Jeremy L. Hylton

Associate

Personal Injury

973.364.8357

jhylton@bracheichler.com



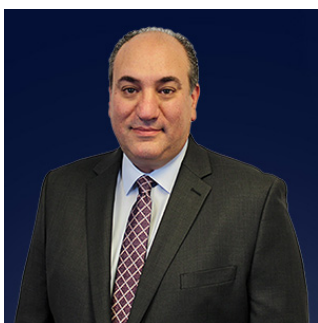
Jeffrey H. Itzkowitz

Member

Real Estate

973.403.3158

jitzkowitz@bracheichler.com



Anthony M. Juliano

Member

Litigation

973.403.3154

ajuliano@bracheichler.com



Thomas Kamvosoulis

Member

Litigation • Labor and Employment

973.403.3130

tkamvosoulis@bracheichler.com



Samantha A. Karni

Member

Real Estate

973.403.3145

skarni@bracheichler.com



Bob Kasolas

Member

Litigation

973.403.3139

bkasolas@bracheichler.com



Michelle R. Katz

Counsel

Real Estate

973.364.8397

mkatz@bracheichler.com



Robert A. Kosicki

Counsel

Corporate Transactions & Financial Services • Family Law Services • Patent, Intellectual Property & IT • Tax • Trusts and Estates

973.403.3122

rkosicki@bracheichler.com



Andrew M. Kuder

Associate

Healthcare Law

973.403.3141

akuder@bracheichler.com



Brian Richard Lenker

Member

Corporate Transactions & Financial Services • Tax

973.403.3115

blenker@bracheichler.com



Daniel G. Leone

Associate

Personal Injury

973.403.3144

dleone@bracheichler.com



Debra W. Levine

Counsel

Healthcare Law

973.403.3142

dlevine@bracheichler.com



Cynthia J. Liba

Counsel

Healthcare Law

973.403.3106

cliba@bracheichler.com



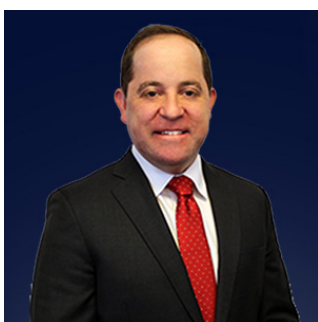
Robyn K. Lym

Associate

Litigation

973.403.3124

rlym@bracheichler.com



Andrew R. Macklin

Member

Litigation

973.447.9670

amacklin@bracheichler.com



Eric Magnelli

Member

Labor and Employment •
Environmental and Land Use •
Litigation

973.403.3110

emagnelli@bracheichler.com



Erika R. Marshall

Counsel

Healthcare Law

973.364.5236

emarshall@bracheichler.com



Ashley L. Matias

Associate

Labor and Employment

973-364-8330

amatias@bracheichler.com



Autumn M. McCourt

Counsel

Litigation • Criminal Defense
and Government Investigations
• Labor and Employment

973.403.3104

amccourt@bracheichler.com



Theodore J. McEvoy

Counsel

Litigation

973.364.5209

tmcevoy@bracheichler.com



Tracy E. Miller

Counsel

Healthcare Law

973-403-3102

tmiller@bracheichler.com



Aladekemi Omoregie

Associate

Litigation

973-447-9678

aomoregie@bracheichler.com



Stuart L. Pachman

Member

Corporate Transactions &
Financial Services

973.403.3133

spachman@bracheichler.com



Roshni H. Patel

Associate

Trusts and Estates

973.364.5222

rpatel@bracheichler.com



Brian Peykar

Counsel

Real Estate

973.403.3121

bpeykar@bracheichler.com



Daniel J. Plaia

Associate

Personal Injury

973-364-5214

dplaia@bracheichler.com



Stuart J. Polkowitz

Member

Litigation

973.403.3152

spolkowitz@bracheichler.com



Daniel J. Pollak

Member

Real Estate Tax Appeals • Real
Estate

973.403.3119

dpollak@bracheichler.com



Allen J. Popowitz

Member

Real Estate • Cannabis Industry •
Corporate Transactions &
Financial Services • Real Estate
Tax Appeals

973.403.3134

apopowitz@bracheichler.com



Jalen D. Porter

Associate

Labor and Employment

973.447.9652

jporter@bracheichler.com



Anthony M. Rainone

Member

Labor and Employment •
Litigation

973.364.8372

arainone@bracheichler.com



Neha C. Rao

Associate

Litigation

973-447-9668

nrao@bracheichler.com



Michael A. Rienzi

Counsel

Litigation • Real Estate • Real
Estate Tax Appeals

973.364.5226

mrienzi@bracheichler.com



Cheryl L. Ritter

Counsel

Tax • Trusts and Estates

973.364.8307

critter@bracheichler.com



David J. Ritter

Member

Tax • Corporate Transactions & Financial Services • Trusts and Estates

973.403.3117

dritter@bracheichler.com



David J. Ritter, Jr.

Member

Corporate Transactions & Financial Services • Tax • Trusts and Estates

973.403.3105

dxritter@bracheichler.com



Keith J. Roberts

Member

Litigation • Healthcare Law

973.364.5201

kroberts@bracheichler.com



Richard B. Robins

Member

Healthcare Law • Litigation

973.447.9663

rrobins@bracheichler.com



Susan R. Rubright

Member

Real Estate • Cannabis Industry • Environmental and Land Use

973.403.3157

srubright@bracheichler.com



Michael D. Russo, IV, Esq.

Associate

Personal Injury

973-447-9654

mrusso@bracheichler.com



Jay Sabin

Member

Labor and Employment • Cannabis Industry

917.596.8987

jsabin@bracheichler.com



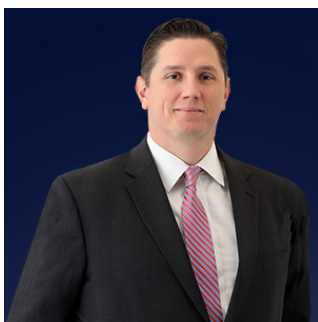
John Simeone

Associate

Litigation

973-447-9665

jsimeone@bracheichler.com



Sean Alden Smith

Member

Family Law Services • Litigation

973.364.5216

ssmith@bracheichler.com



Carl J. Soranno

Member

Family Law Services • Litigation • Patent, Intellectual Property & IT • Bankruptcy

973.403.3127

csoranno@bracheichler.com



Thomas J. Spies

Counsel

Litigation

973.364.5235

tspies@bracheichler.com



Michael A. Spizzuco, Jr.

Member

Litigation • Labor and Employment

973.364.8342

mspizzuco@bracheichler.com



Frances B. Stella

Member

Environmental and Land Use •
Cannabis Industry • Litigation •
Real Estate

973.403.3149

fstella@bracheichler.com



Rose Suriano

Member

Litigation

973.403.3129

rsuriano@bracheichler.com



Paragaph Testing

Associate

Tax

646.226.2267



David L. Tsin

Counsel

Corporate Transactions &
Financial Services

973.364.5237

dtsin@bracheichler.com



Paul R. Tyndall

Counsel

Corporate Transactions &
Financial Services

973.403.3123

ptyndall@bracheichler.com



Amy Van Fossen

Counsel

Trusts and Estates

973-447-9675

avanfossen@bracheichler.com



Victoria A. Verlezza

Associate

Personal Injury

973.447.9659

vverlezza@bracheichler.com



Jonathan J. Walzman

Member

Healthcare Law • Corporate
Transactions & Financial
Services

973.403.3120

jwalzman@bracheichler.com



Lauren Adornetto Woods

Counsel

Labor and Employment •
Litigation

973.364.5211

lwoods@bracheichler.com



Edward J. Yun

Member

Healthcare Law

973.364.5229

eyun@bracheichler.com



John R. Zepka

Associate

Corporate Transactions &
Financial Services • Cannabis
Industry

973.403.3150

jzepka@bracheichler.com